



CGC Buildings

Building Survey solution for automatic 2D/3D/BIM creation

BUILDINGS

Calvo Geospatial Consulting's Buildings is a solution for a quick and easy building survey, however adding an automatic light BIM database to enable you to create 2D plans as well as 3D / BIM building models by a mouse click.

OPTIMIZED WORKFLOW

The software guides you to measure the needed points to define each building element such as walls, doors, windows, columns, beams, staircases, etc., in the quickest and easiest way.

Furthermore much more information is recorded inside the project which enables you to create 2D and 3D models with just a mouse click inside TBC or through an own SketchUp Plug-in.

CUSTOMIZE YOUR DELIVERABLES

Buildings has been developed to enable different outputs according to different projects 'or customers' requirements.

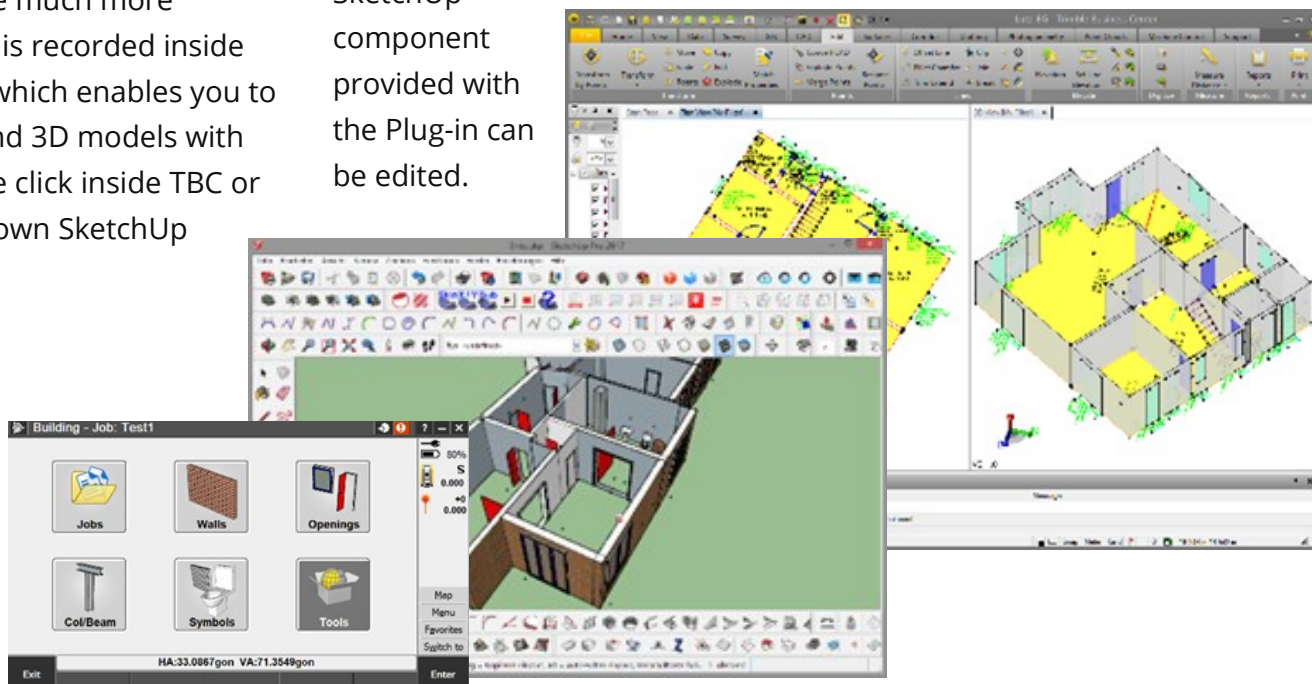
Layers, colours, texts, symbols, annotations, etc. can be customized by editing the standard Feature Code Library (FXL file). This enables you to use different layouts for each needed output using the same software and data collection process.

Furthermore the standard SketchUp component provided with the Plug-in can be edited.

Benefits

RELIABILITY

- ▶ Easy to use
- ▶ Actual and known Trimble Access environment
- ▶ No additional CAD package needed
- ▶ Automatic 2D and 3D modelling



FUNCTIONS

Jobs

- Create Job
- Open Job
- Settings
- Import fixed format
- Export fixed format
- Export custom format

Walls

- Create Job
- Open Job
- Settings

Openings

- Doors
- Windows
- Staircases

Columns / Beams

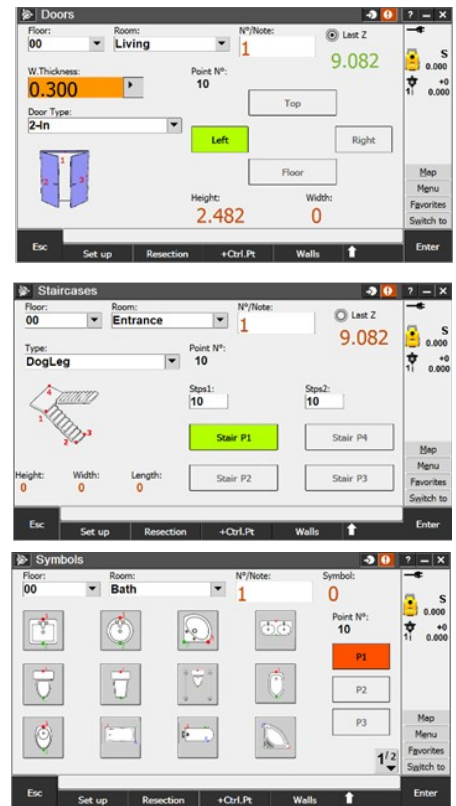
- Columns
- Beams

Symbols

- Heating
- Symbols

Tools

- Measure topo
- Measure codes



DATAFLOW

