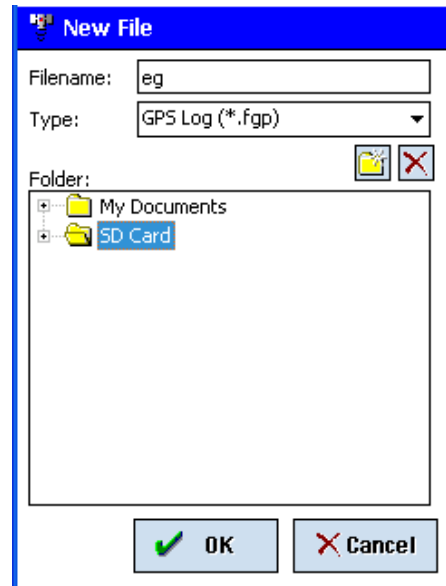
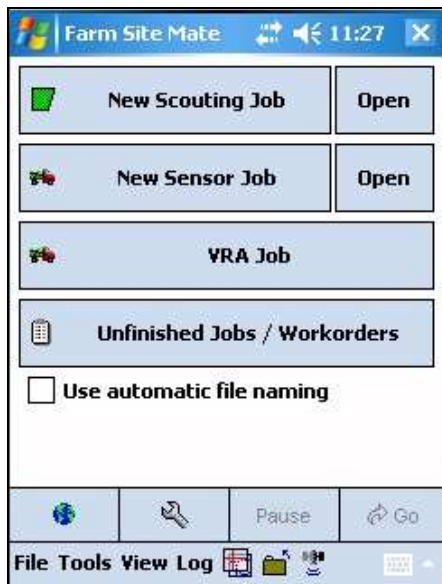
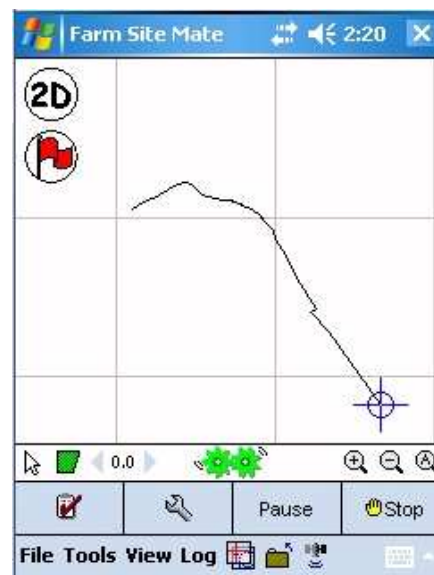
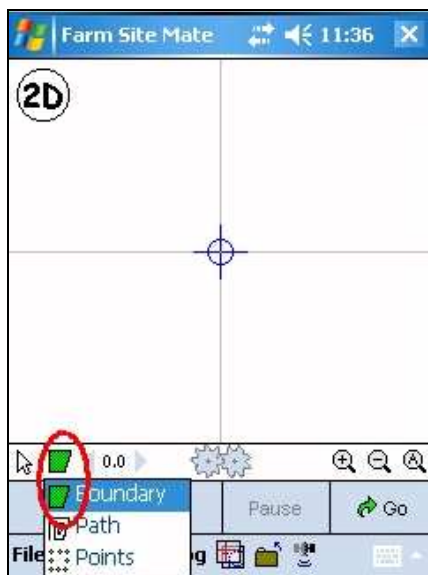


LOGGING A FIELD BOUNDARY

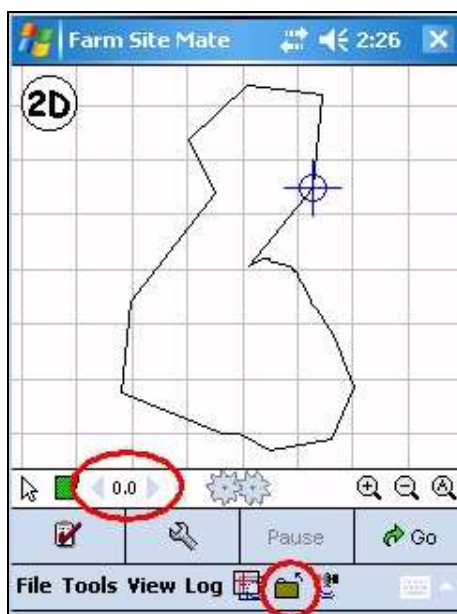
1. Start Site Mate and tap on New Scouting Job. Enter a name for the boundary you are creating and select a location to save it. This will be where it saves any changes to the file by default. Click OK and the 'Map' screen will display (if you are using Site Mate Agronomy or VRA you will need to select your Template or tap OK once more).



2. Ensure that Boundary is selected at the bottom of the screen (indicated by a green box/field), tap GO and drive your boundary. You can tap the 'Flag' button at any time to mark points of interest.



3. When you are about to finish mapping, tap 'Stop' and the boundary will be auto-closed. The distance at which this works will depend on the value entered in Config (spanner button)/Logging/Auto Logging
4. Tap the 'Close All' icon (inside the bottom circle in the screenshot) to save and exit the field boundary file.

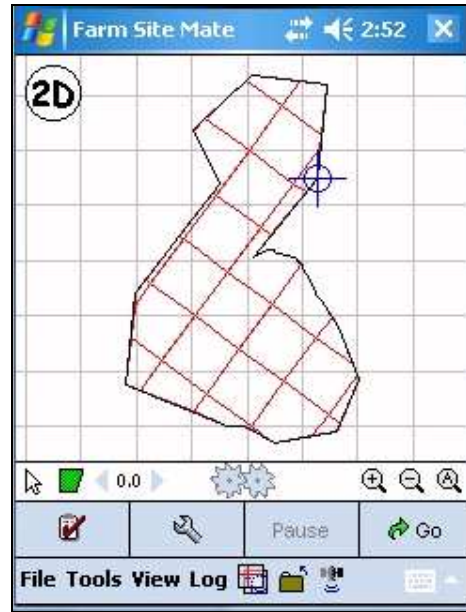
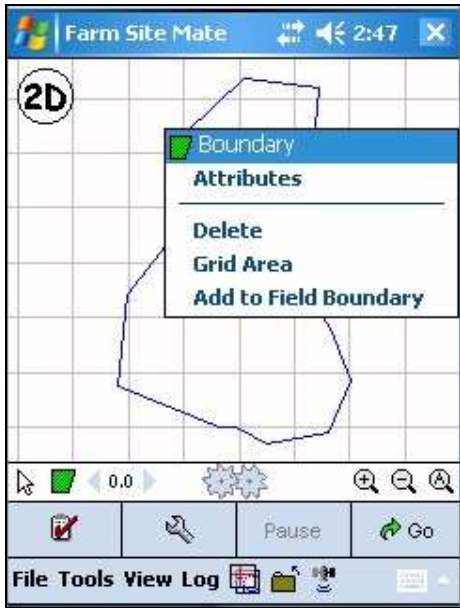


You can use the offset tool for more accurate field boundaries. Tap on either Config/Logging/Offset or select the value within the top circle above to enter your offset.

GRIDDING A FIELD FOR SAMPLING PURPOSES

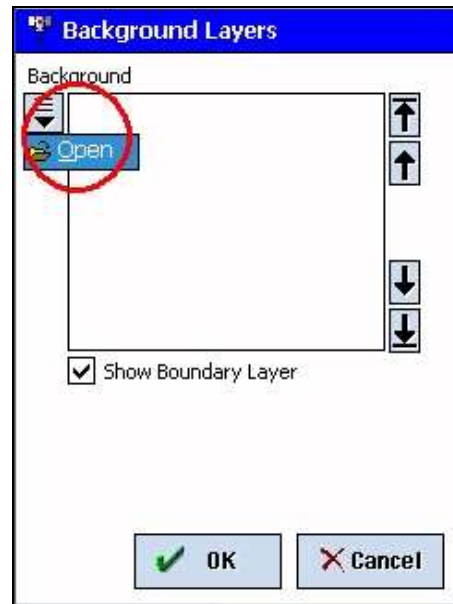
1. Select the Job tab and then Open (beside New Scouting Job). Select your field boundary. When your field boundary is displayed, tap just inside the boundary until the line turns blue and a box of options is displayed. Select 'Grid Area'.
2. Select the measurements and setup that will suit the process best and tap OK. You will need to tap and hold the stylus against the screen whilst dragging a line to create a grid. The 'Move' and 'Rotate' buttons can be used to modify or restart the gridding process. When you are happy with the grid, tap OK. Export the grid as lines only (for area based sampling, choose polygon) and tap OK. Your grid will be displayed. Tap the 'Close All' button.

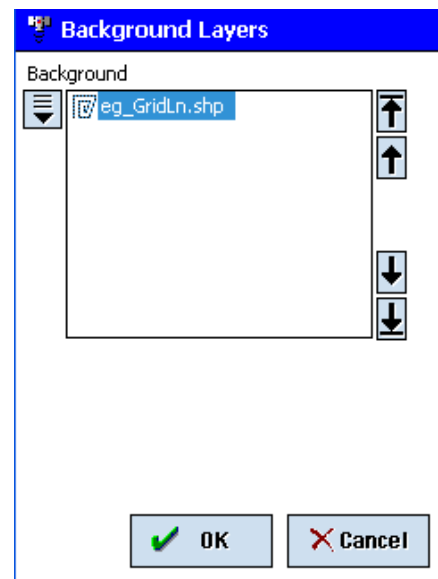
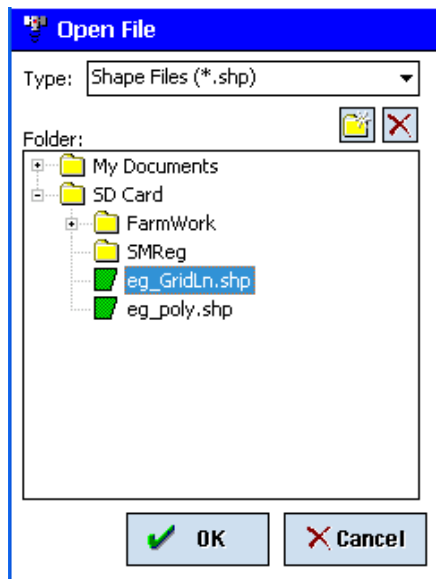




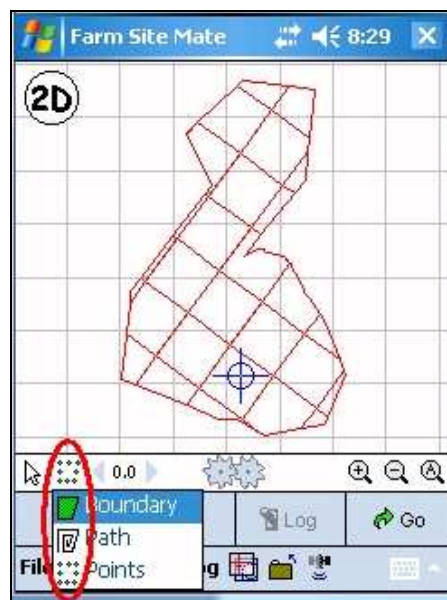
LOGGING SAMPLE POINTS

1. You will need to create a new file to log points in, and have the grid loaded as a background to associate data with the field. Select the Layers icon at the bottom of the screen and load the gridded boundary, typically denoted by the file name followed by the extension ‘_GridLn.shp’.





2. Select the Job tab and New Scouting Job to create a file in which your points will be logged (adding _pts to the filename will be helpful for identification later). Select a location to save the file and choose 'OK' until you arrive at the map screen. The grid will be displayed as a background but the active file that you will be logging data to is the new file. Ensure that the 'points' option is selected at the bottom of the screen and tap Go.



3. Now you can move to any location within the field or grid and log a sample point by tapping 'Log'.
4. Repeat this for any remaining points that you wish to log. Once you have finished, tap 'Stop' and select the 'Close All' icon. Your Map screen will go blank and the job will be saved.

