

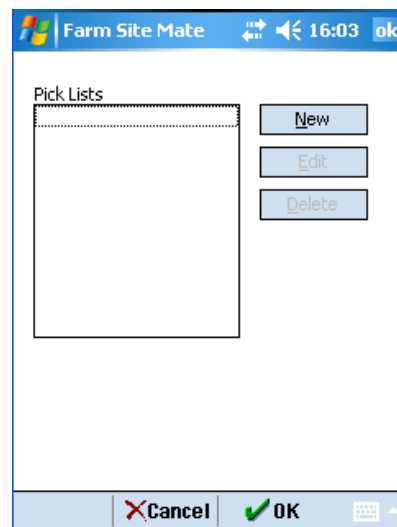
# SETTING UP PICK LISTS AND DATABASE TEMPLATES FOR SAMPLING PURPOSES

If you wish Pick Lists and Database Templates to be available to you when you create a new file, you must set them up before creating a new file.

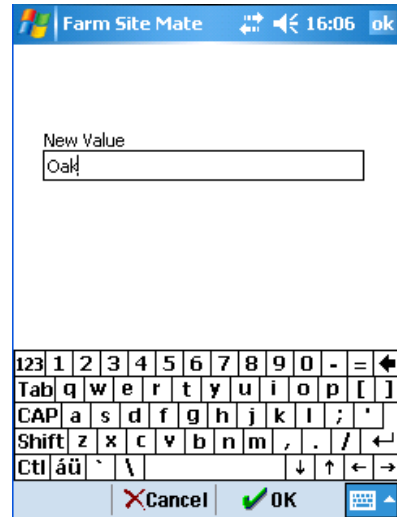
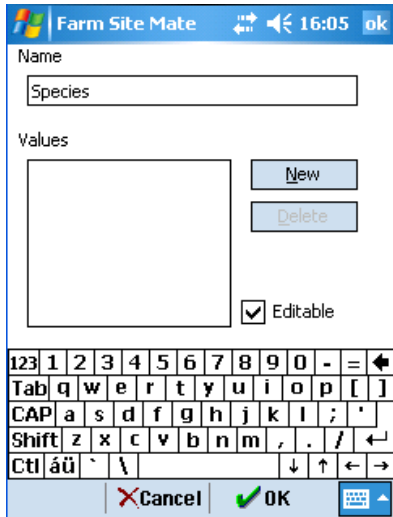
Setting up Pick Lists first will give you the ability to add a data item with a scale of values to your Database Template, with which you can specify multiple data items to associate with files.

Once these files are set up, you can choose to associate a database template with a file each time a new file is created.

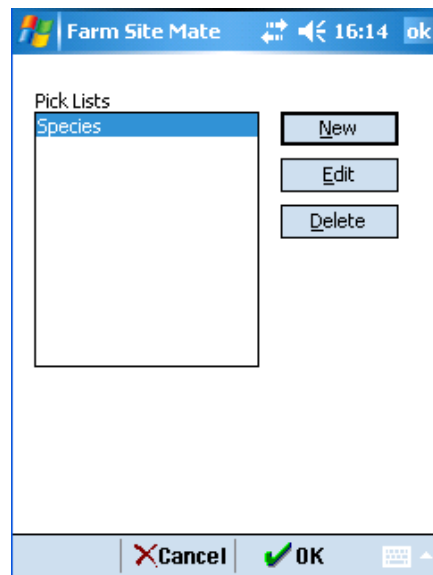
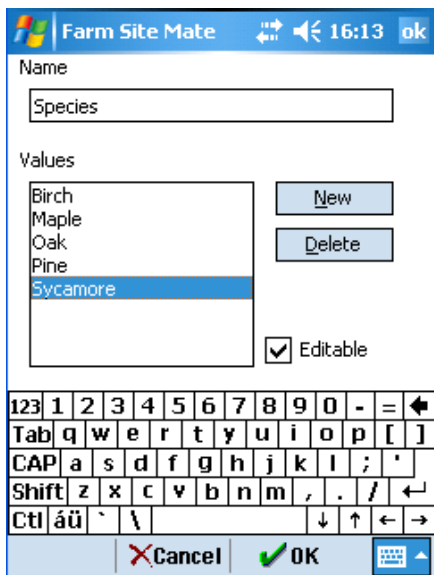
1. Begin by selecting the **Config (spanner)** tab at the bottom of the screen and then **Logging**. Select **Pick Lists**



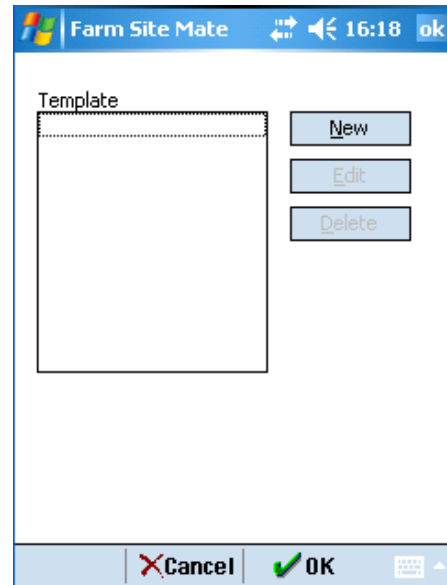
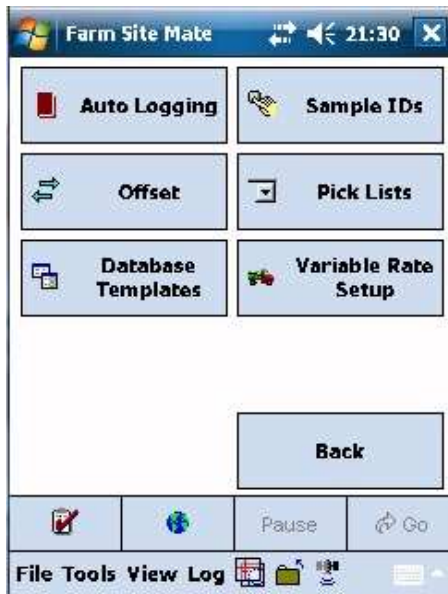
2. Select **New** and enter a description for your data item. Select **New** again to enter a scale of values, numerical or descriptive



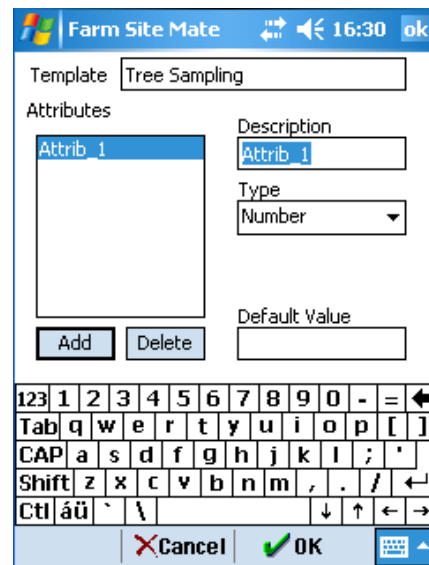
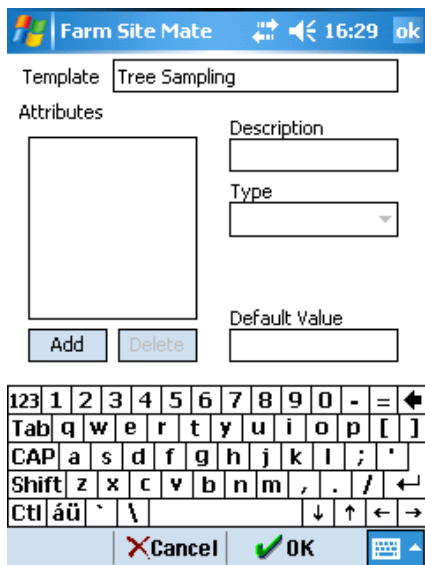
3. When you have finished creating your Pick List, you may protect it from being edited by unchecking the **Editable** checkbox. When you are satisfied with your Pick List, tap **OK** to return to the Pick List screen. You should see your new Pick List displayed. Tap **OK**



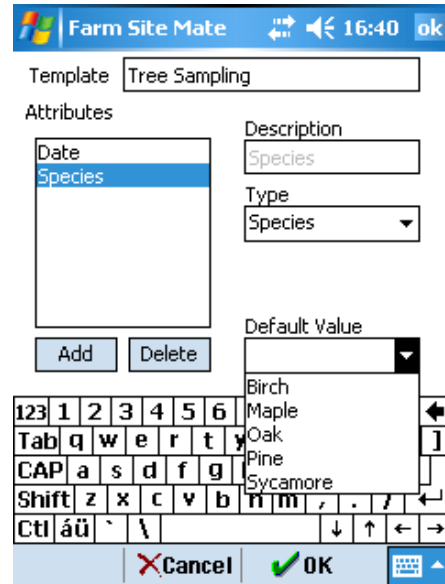
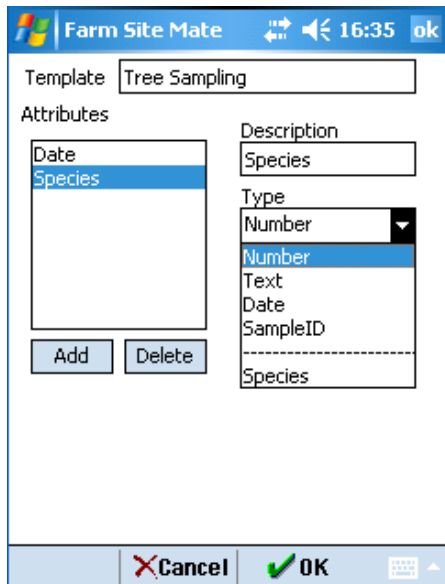
4. Select **Database Templates** and tap **New**



5. Enter a description for your template and select **Add** to enter data items



- You can enter data items without Pick Lists for any information that is not likely to match a predefined list. However, at this point you can specify your pre-existing Pick List as a data item by naming it and selecting the appropriate Pick List from the **Type** drop-down list. If many values for that particular item are similar, you may also specify a **Default Value** that will be automatically selected when a sample point/area is logged



- When you are satisfied with your pick list, tap **OK**. You should see your new template displayed in the list. Tap **OK** to return to the Config screen. At this point, you should save your settings (ie, Pick Lists and Database Templates) to your SD Card

