



## Opsætning af extern sensor

### I Pathfinder Office

Opret Data Directory, hvor attributten indgår, f.eks:

Data Directory "COWI"  
Feature "jord"  
Attribut "AAA"

*Exportér det nye data directory til dataloggeren*

*Forbind den externe sensor til dataloggerens øverste port (v.h.a. Trimble-kabel 32287-00)*

### I Asset surveyer

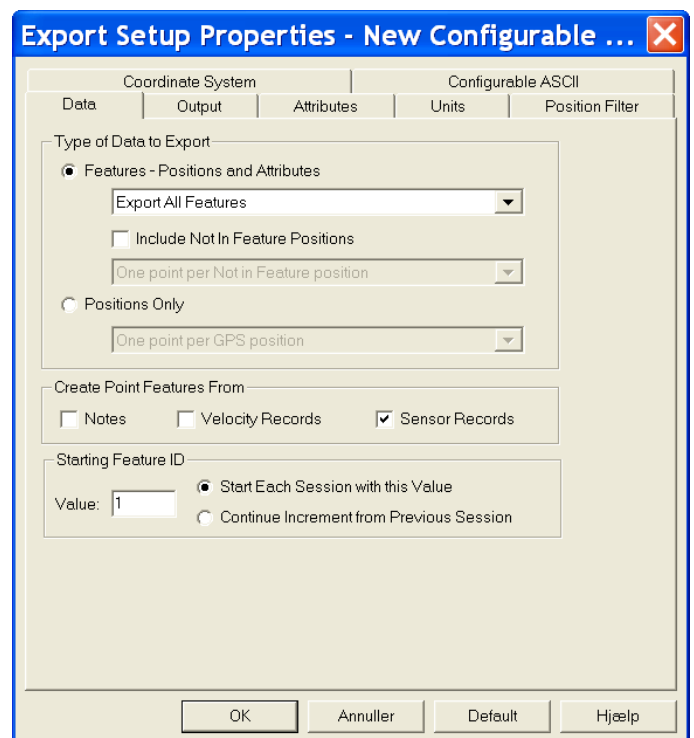
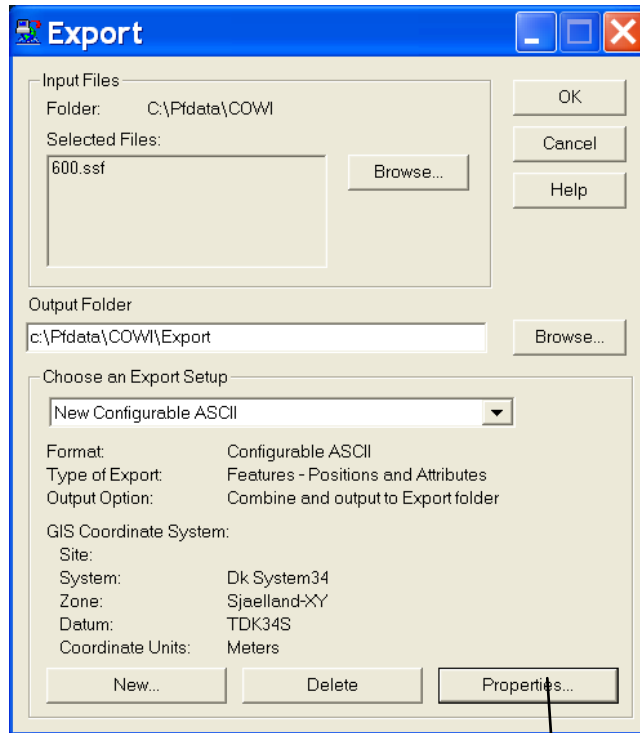
Configuration

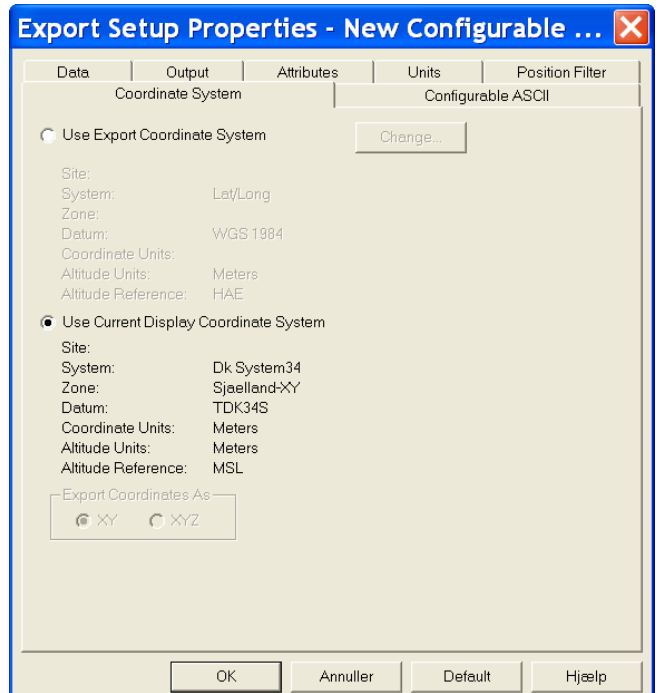
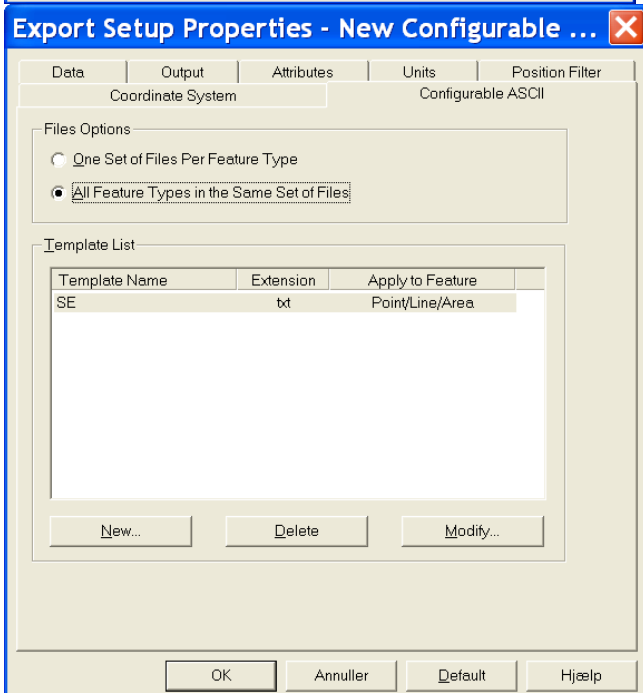
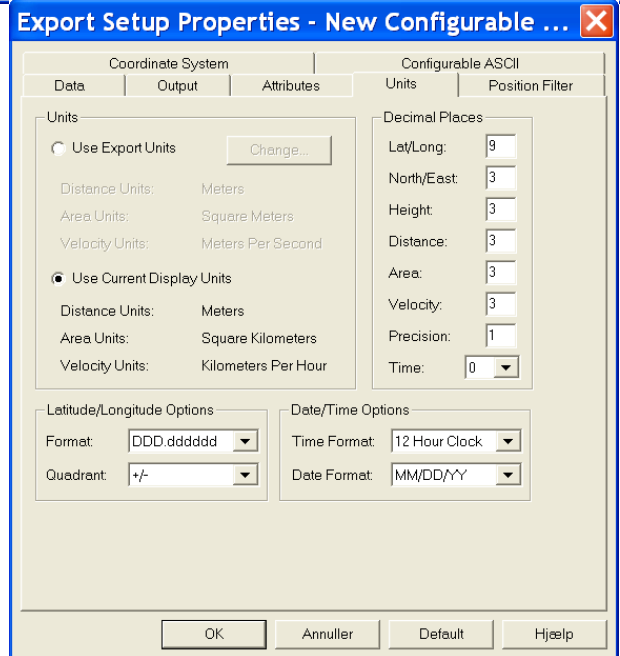
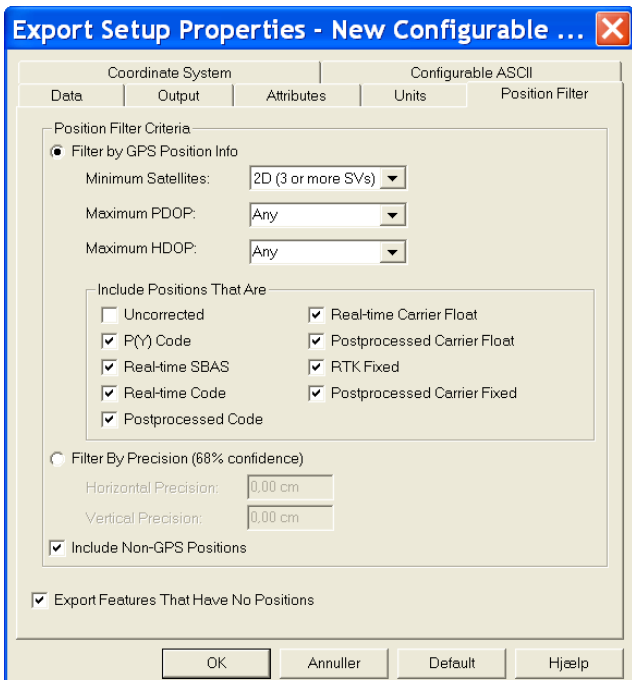
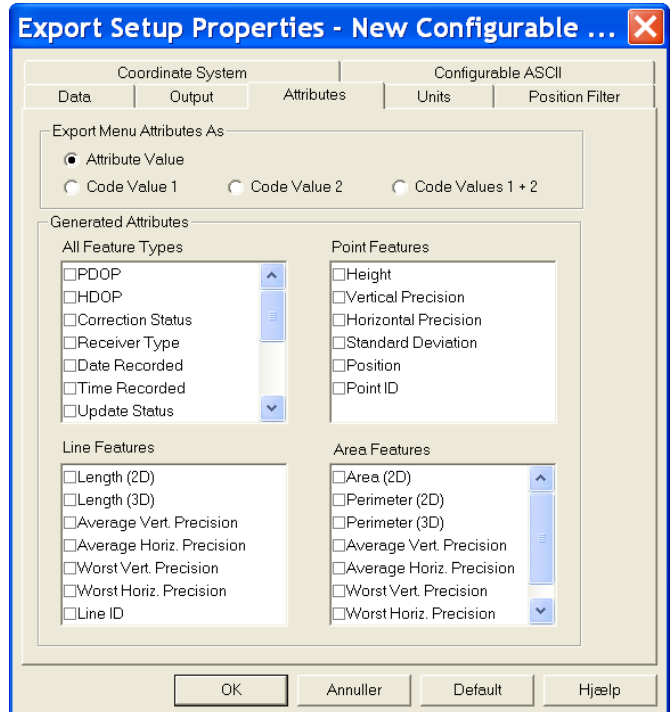
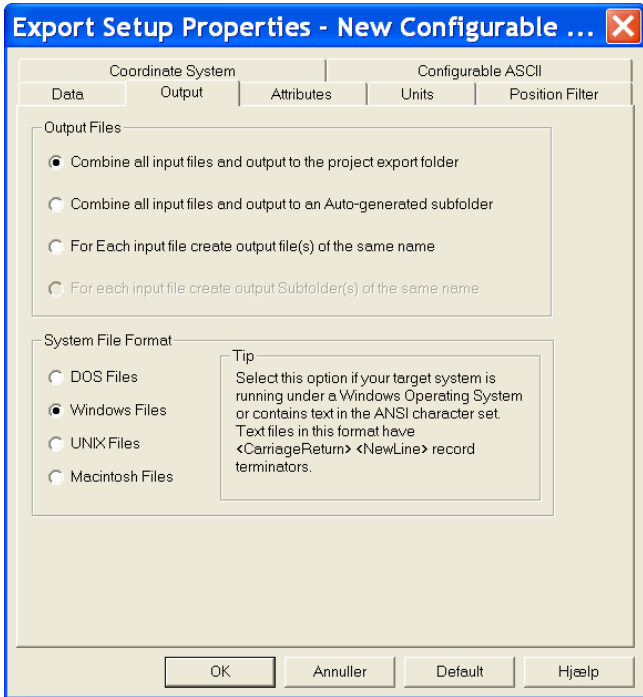
External sensors  
(Vælg sensor)  
(Vælg setup)

Opsætning em31 (COWI)

Auto Connect	YES
Name	em31
Channel	0
Connect	?
Disconnect	?
Data Request	?
Intervals	
Point feature	ALL
Line/Area	None
Not in feature	None
Feature	AAA (navnet er opdigtet – tildelt via Data Directory)
Data recieved	
Prefix	-
Suffix	\ODT
Max byte	?
Time Out	0,500 s
Audible click	No
Status line	YES

# Export i PFO





**Det vil sige at .inf filen ser således ud:**

Setup Used: New Configurable ASCII  
Export Format: Configurable ASCII  
Data Type: Features  
Feature Selection: Export All Features  
Not In Feature Positions: Not Used  
Export Notes: No  
Export Velocity Records: No  
Export Sensor Records: Yes  
File Option: All Features in the Same File Set  
Templates: SE  
File Structure: Windows  
Export Menu Attribute As: Attribute Value  
Generated Attributes: None  
Position Filter Details:  
Filter By: GPS Criteria  
Maximum PDOP: Any  
Maximum HDOP: Any  
Min Number Of SVs: 2D (3 or more SVs)  
Uncorrected: No  
P(Y) Code: Yes  
Real-time SBAS: Yes  
Real-time Code: Yes  
Postprocessed Code: Yes  
Real-time Carrier Float: Yes  
Postprocessed Carrier Float: Yes  
RTK Fixed: Yes  
Postprocessed Carrier Fixed: Yes  
Non-GPS: Yes  
Coordinate System: Dk System34  
Coordinate Zone: Sjælland-XY  
Datum: TDK34S  
Coordinate Units: Meters  
Altitude Units: Meters  
Altitude Reference: MSL  
Geoid Model: DVR90\_2002 (Denmark)  
Include Altitude: No  
Distance Units: Meters  
Area Units: Square Kilometers  
Velocity Units: Kilometers Per Hour  
Precision Units: Centimeters  
North/East DP: 3  
Altitude DP: 3  
Distance DP: 3  
Area DP: 3

Data Dictionary

-----  
jord - Point Feature  
AAA - String, Length = 30  
Point\_generic - Point Feature  
Comment - String, Length = 32

Line\_generic - Line Feature  
  Comment - String, Length = 32  
Area\_generic - Area Feature  
  Comment - String, Length = 32  
Sensor - Point Feature  
  Text - String, Length = 80  
  Channel - Numeric, DP = 0, Min = 0, Max = 0, Default = 0

**Og så vil exportfilen f.eks. se således ud:**

"jord";145611.488;-84351.126;32.968;"0032+8188"  
"jord";145611.430;-84351.142;33.169;"0032+8188"