



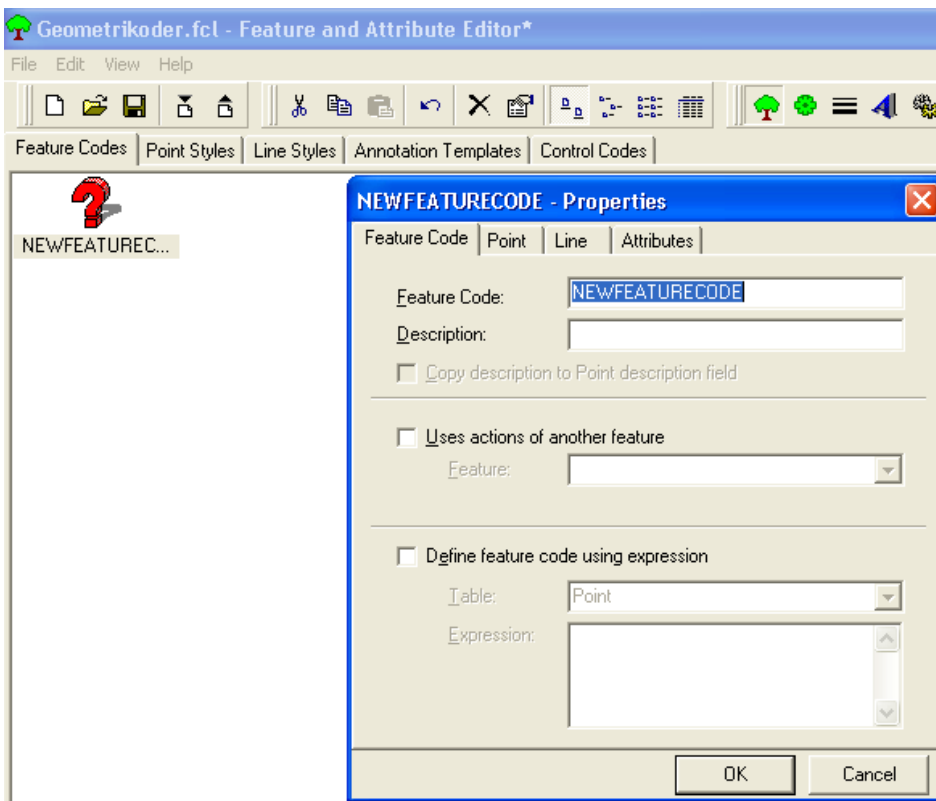
TGO kodebibliotek

Per Dahl Johansen

GEOTEAM A/S

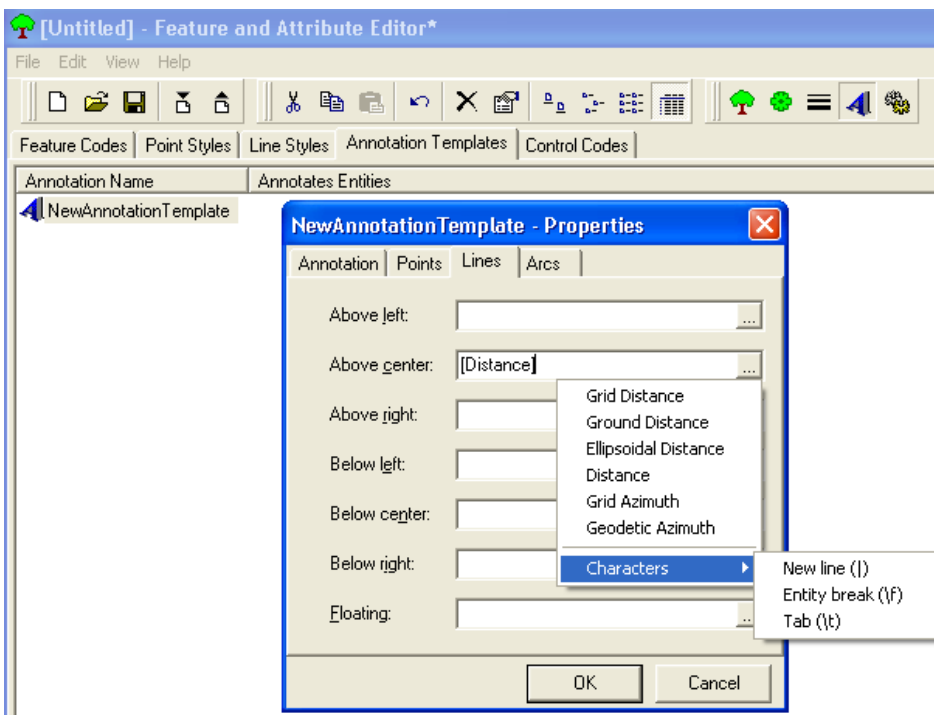
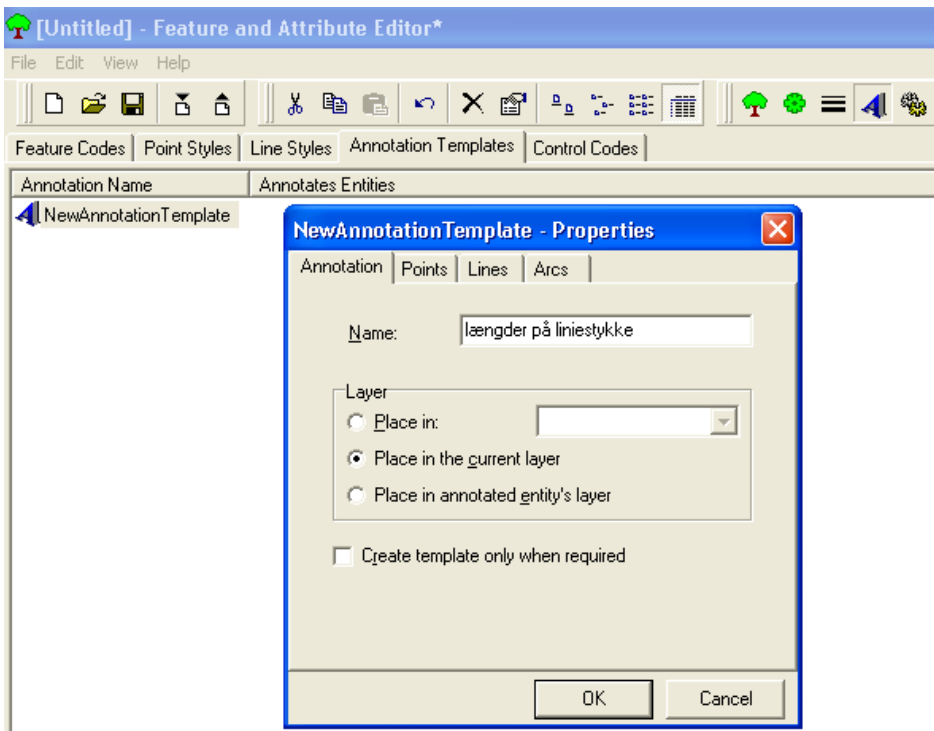
pdj@geoteam.dk

Ny Objektkode



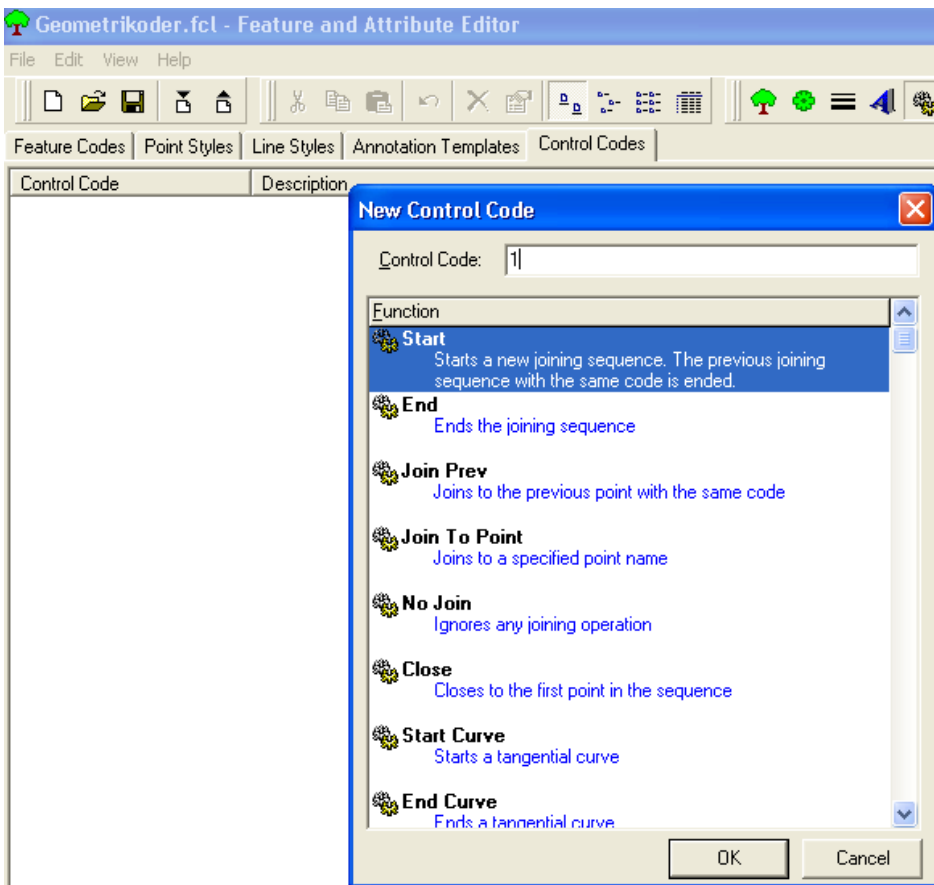
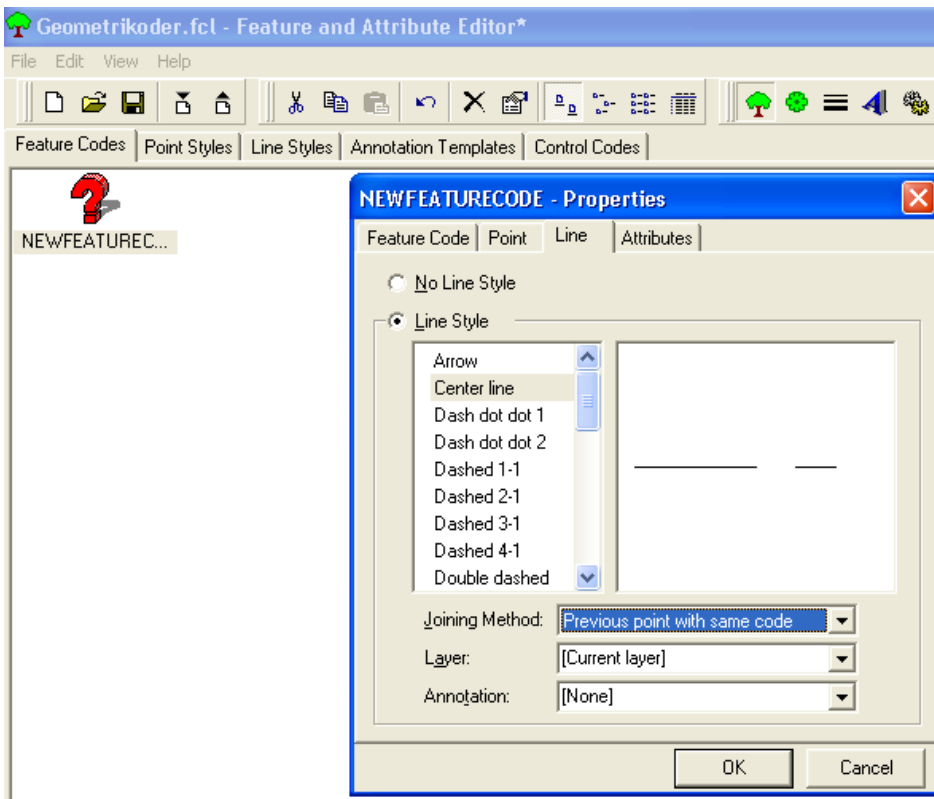
Annotationer

Tekst der bliver tilføjet projektet og kan exporteres til f.eks DXF.



Geometrikoder (Control Codes)

At arbejde med linier og flader.

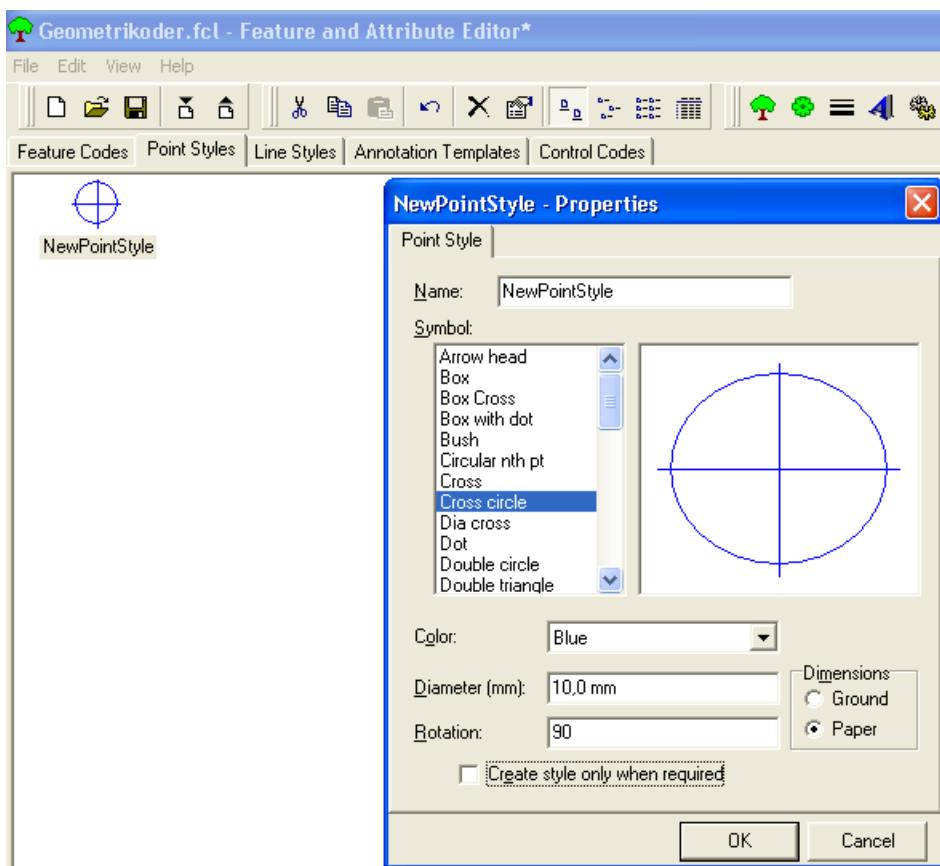


Mest brugte koder:

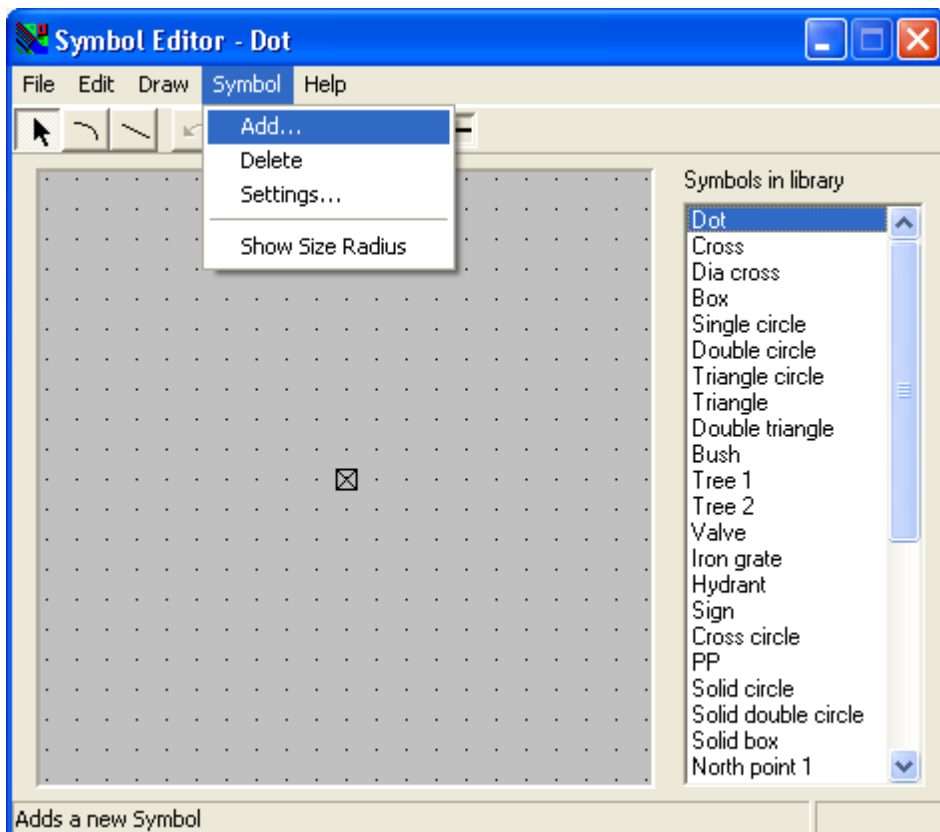
Start:	Overruler "Previous point with same code". Bruges også til at forbinde tilbage til.
End:	Overruler " Previous point with same code".
Join Prev:	Samme som " Previous point with same code".
Join To Point:	Efterfølges af et punktnr. F.eks: "JTP 201"
Close:	Lukker til sidste "Start"
Curve Start/End:	Laver en kurve tangentielt med sidste/næste liniestykke.
New Curve/ End On Curve:	Ikke tangentielt kurve, Starter/slutter i et knæk.
Arc Start/End:	Laver en bue tangentielt med sidste/næste liniestykke.
New Arc/ End On Arc:	Ikke tangentielt bue, Starter/slutter i et knæk.

Punkter og linier

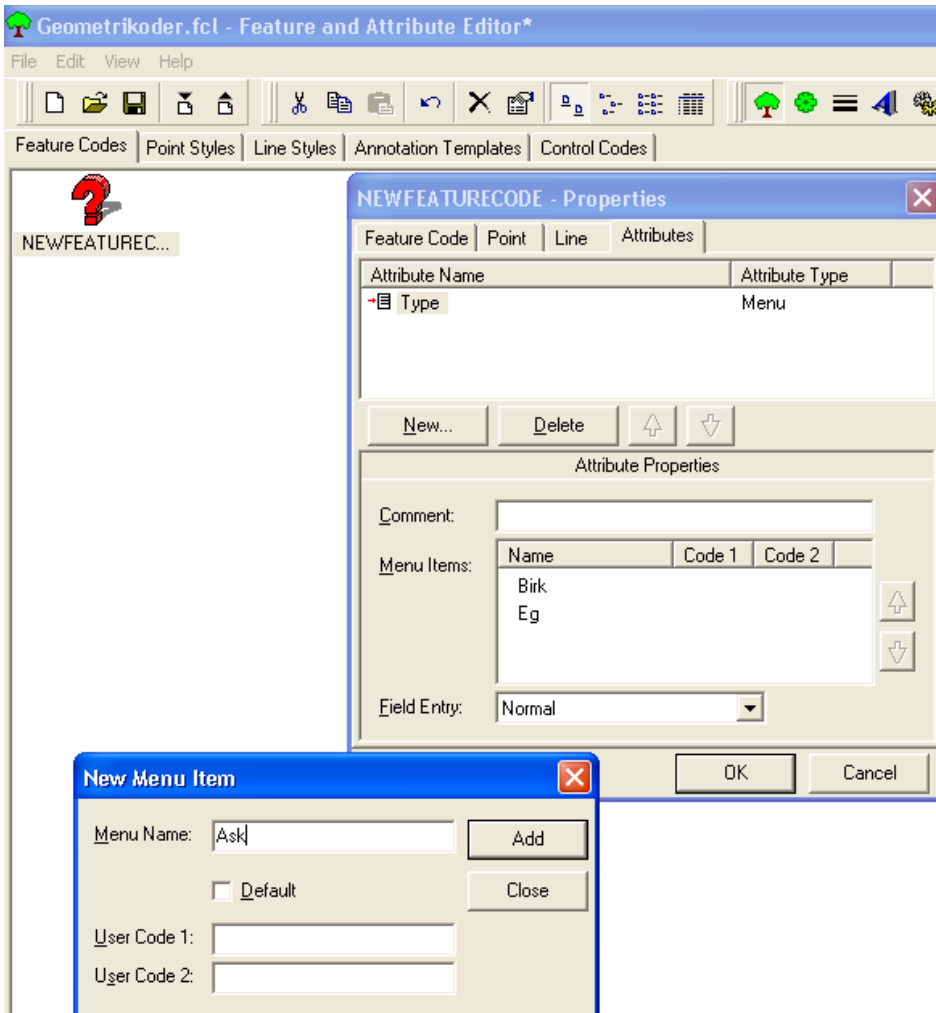
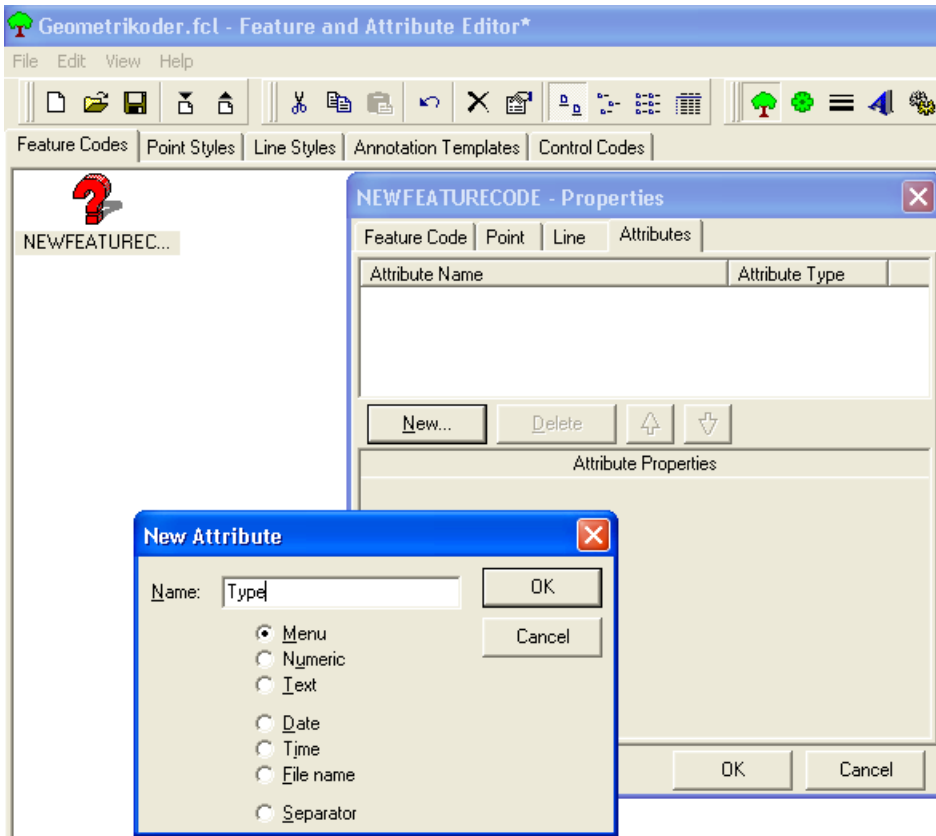
Tilpas punkter og linier.

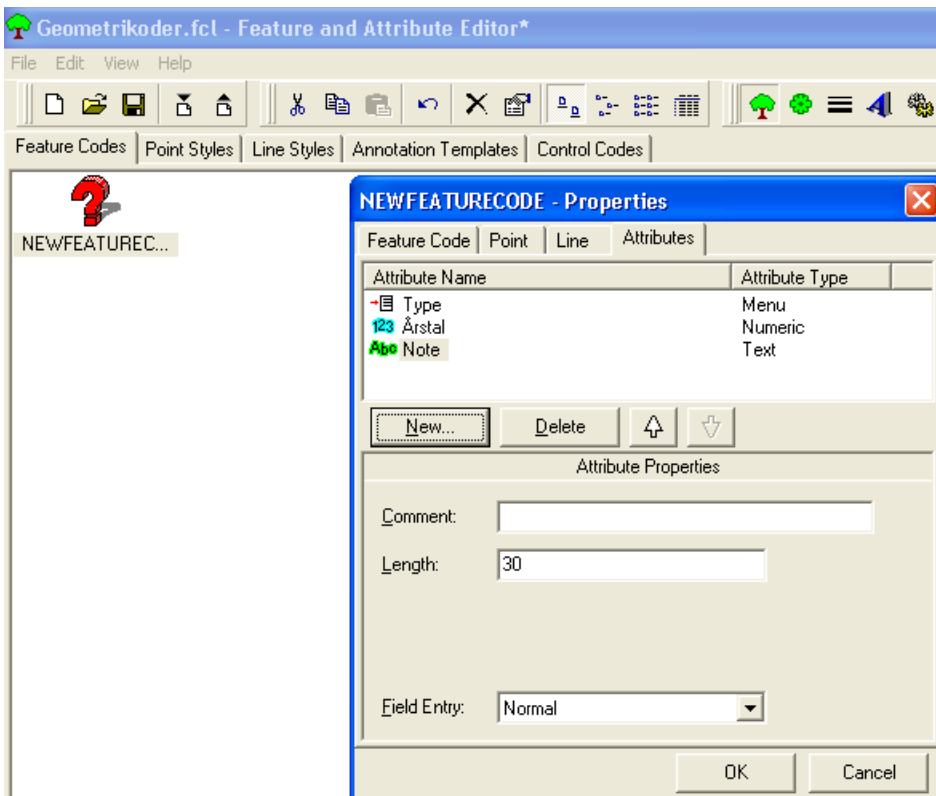
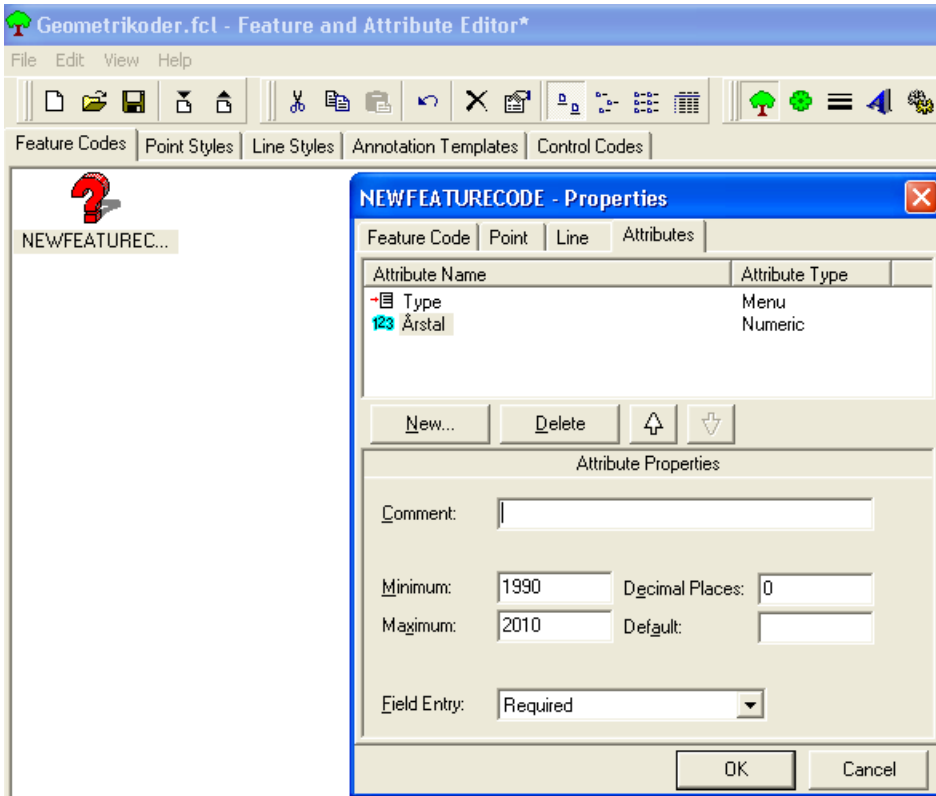


Symbol eller Line editor: C:\Programmer\Trimble\Trimble Geomatics Office\Utility

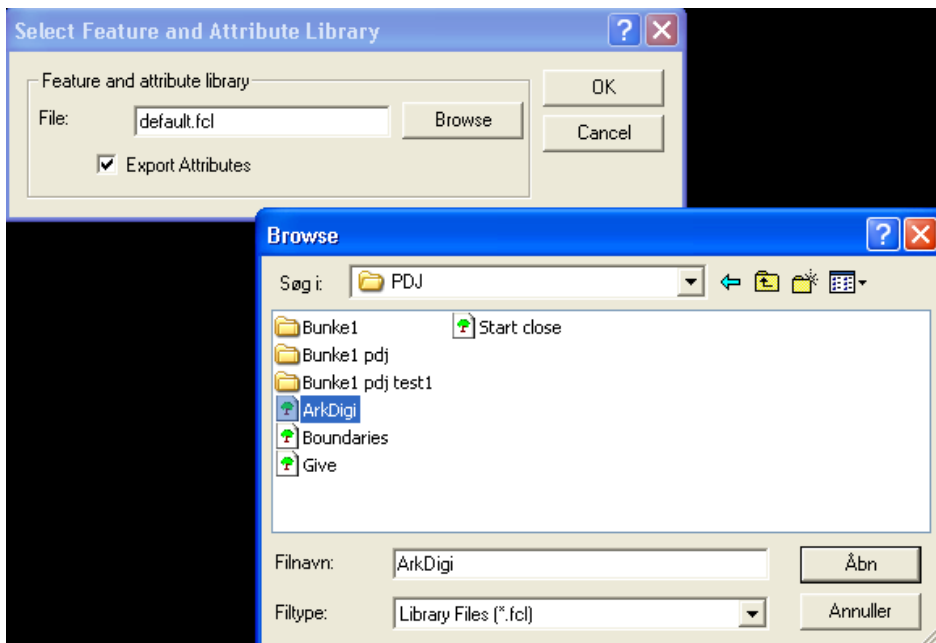
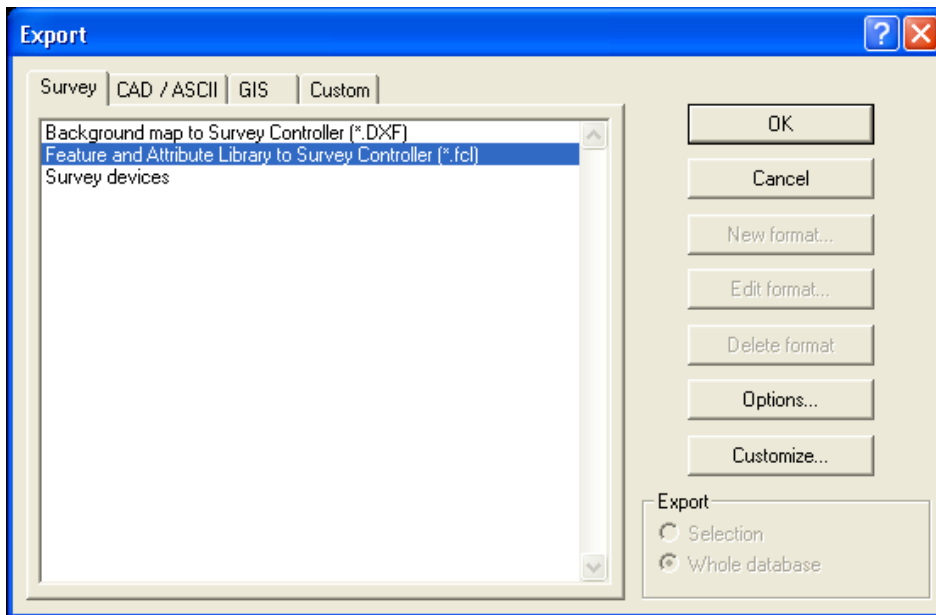


Attributter





Exporter kodebibliotek til SC.



Costum export format

