

19 December 2012

Using Windows Mobile Device Center with the Windows 8 Operating System

Summary

To synchronize a Trimble handheld powered by the Windows® Embedded Handheld or Windows Mobile® 5.x or later operating system with an office computer running the Windows 7 or later operating system, you must have the Windows Mobile Device Center (WMDC) application installed and running on the office computer.

Out of the box, the Windows 8 operating system is not compatible with the WMDC application.

This support note describes recommended steps to get the WMDC operating with Windows 8 so that data and applications can be transferred between the office computer and the Trimble handheld.

What is Windows 8?

Windows 8 is the latest release of the Windows operating system, produced by Microsoft® for use on personal computers, including home and business desktops, laptops and tablets. The operating system was released on 26 October 2012. Windows 8 introduces:

- a new user interface based on the Microsoft "Metro" design language, featuring a new Start screen with a grid of dynamically updating tiles to represent applications;
- a new app platform with an emphasis on touchscreen input;
- the new Windows Store to obtain and purchase applications for the system;
- the ability to synchronize programs and settings between multiple devices.

What is Windows Mobile Device Center?

Windows Mobile Device Center (WMDC) is a synchronization software program developed by Microsoft. It is the successor to the Microsoft ActiveSync® technology. It is designed to synchronize various content including applications, contacts, calendar events, web browser favorites, and other files between Windows Mobile and Windows Embedded Handheld devices, and the Windows operating system.

This document is for informational purposes only and is not a legally binding agreement or offer. Trimble makes no warranties and assumes no obligations or liabilities hereunder.

© 2012, Trimble Navigation Limited. All rights reserved. Trimble, and the Globe & Triangle logo are trademarks of Trimble Navigation Limited, registered in the United States and in other countries. Microsoft, ActiveSync, Windows, and Windows Mobile are either registered trademarks or trademarks of Microsoft Corporation in the United States and/or other countries. All other trademarks are the property of their respective owners.



Windows 8 and WMDC compatibility

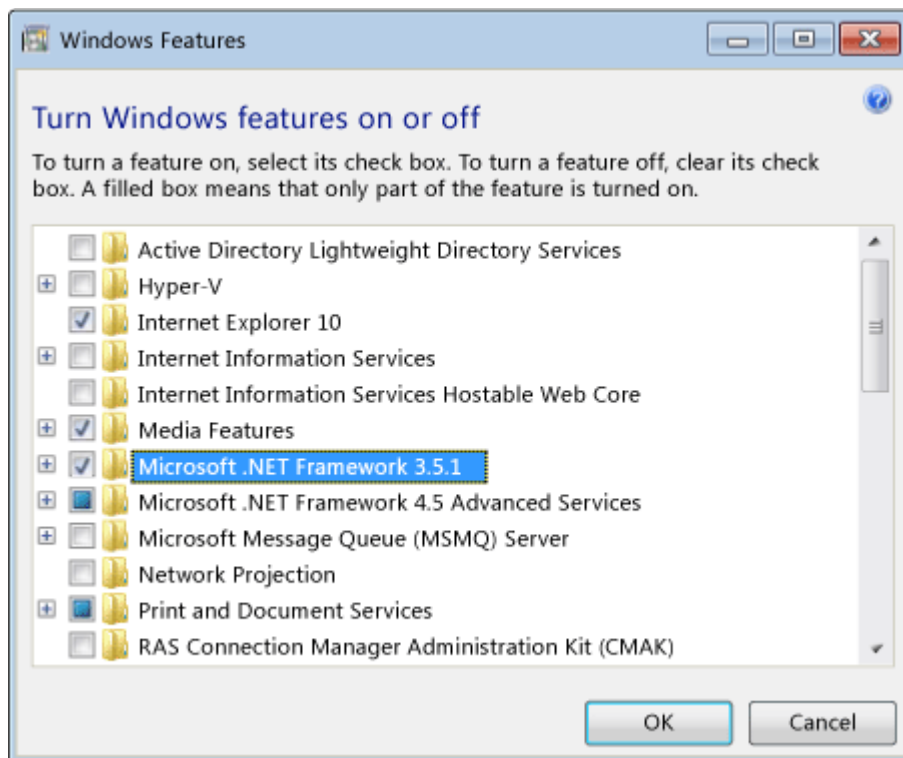
The .NET Framework 4.5 is included with Windows 8 and is installed with the operating system. However, WMDC requires the .NET Framework 3.5 which is not part of the Windows 8 installation.

Attempting to run or install WMDC prior to enabling the .NET Framework may cause issues with installation of the WMDC application. Trimble recommends enabling the .NET Framework 3.5 via the Control Panel prior to connecting any Windows Mobile and Windows Embedded Handheld devices to the office computer.

Enabling the .NET Framework 3.5

You can enable the .NET Framework 3.5 through the Control Panel on the Windows 8 office computer.

1. Make sure the office computer is connected to the Internet.
2. To access the Control Panel, right-click the *Start* window, click **All Apps**, then under the Windows system list, click the control panel icon.
3. In Control Panel, select *Programs and Features*, and then select *Turn Windows features on or off*.
4. Select the *Microsoft .NET Framework 3.5.1* check box.
5. Click **OK**.



If you are not able to connect to the Internet, or you experience any problems, contact your IT department for further assistance. Also, refer to the .NET Framework 3.5 [installation guide](#) from Microsoft for troubleshooting information.

Installing WMDC on Windows 8

Once the .NET Framework 3.5 is enabled, you can install the WMDC application. Connect the handheld to the office computer, and drivers for the handheld and the WMDC application will be automatically installed.

Using WMDC on Windows 8

The first time the WMDC application is installed, it will run automatically when the installation process is complete.

Subsequently, if the WMDC application does not self-launch automatically after you connect the handheld to the office computer, you will need to launch the application manually to transfer files and/or applications. The WMDC application creates a shortcut on the Start Page when it is installed. To launch the application, ensure the handheld is connected to the office computer via USB cable, and double-click the WMDC icon on the Start Page.